

DUKE-NUS GMS

CONSTRUCTION PROGRESS PHOTOS SEPTEMBER 2007



Igniting the pioneer spirit

GMS Site Progress Tracking Table - As at 30 Sep 07.xls

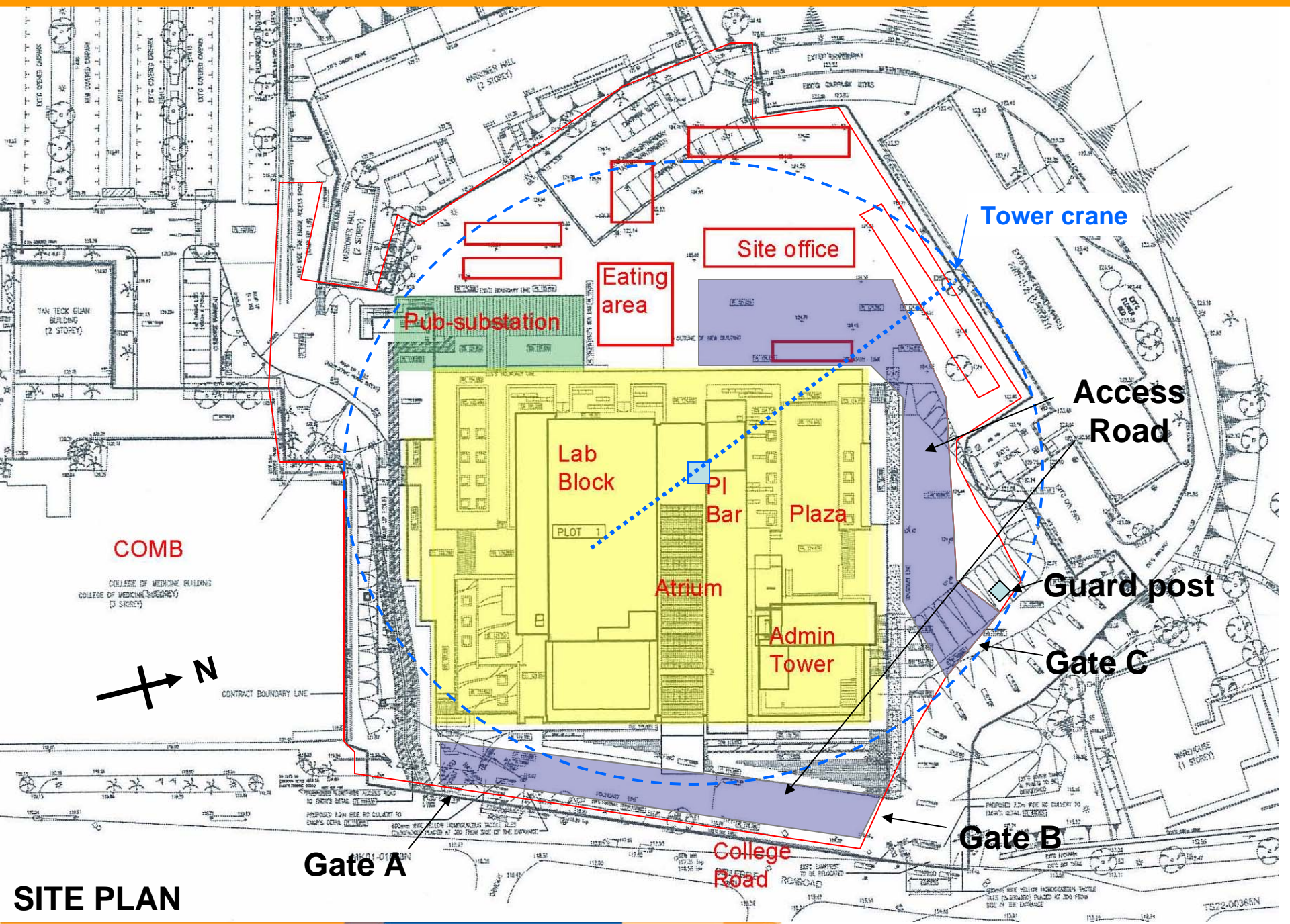
Structural Works Progress

S/n	Level	Based on Master Program (25/6/07)		Based on Catch Up Program (29/8/07)			Site Progress (3/10/07)		
		Planned		Planned			Actual		
		Start	Finish	Start	Finish	Ahead or Delay	Start	Finish	Ahead or Delay
1	Excavation	25-04-07	03-07-07	25-04-07	03-07-07	0	19-04-07	02-07-07	1
2	Pilecaps	30-05-07	20-07-07	30-05-07	20-07-07	0	28-05-07	19-07-07	1
3	1st Storey beam & slab	04-07-07	07-08-07	04-07-07	07-08-07	0	05-07-07	30-08-07	-23
4	Retaining walls	14-08-07	03-09-07	14-08-07	03-09-07	0	14-08-07		
5	Backfilling	04-09-07	08-09-07						
6	2nd Storey beam & slab	08-08-07	11-09-07	28-08-07	26-09-07	-15	09-08-07	Time lapsed - 30 days/ 30 days = 100% but actual is 95%. Last slab will be cast on 4 Oct 07 ** -16.5	
7	3rd Storey beam & slab	12-09-07	13-10-07	14-09-07	21-10-07	-8	13-09-07	Forwork at 3rd storey is in progress	
8	4th Storey beam & slab	15-10-07	01-11-07	09-10-07	09-11-07	-8			
9	5th Storey beam & slab	02-11-07	23-11-07	28-10-07	26-11-07	-3			
10	6th Storey beam & slab	24-11-07	12-12-07	14-11-07	12-12-07	0*			
11	7th Storey beam & slab	13-12-07	31-12-07	13-12-07	31-12-07	0			
12	8th Storey beam & slab	01-01-08	18-01-08	01-01-08	18-01-08	0			
13	9th Storey beam & slab	19-01-08	09-02-08	19-01-08	09-02-08	0			
14	10th Storey beam & slab	11-02-08	28-02-08	11-02-08	28-02-08	0			
15	11th Storey beam & slab	29-02-08	29-03-08	29-02-08	29-03-08	0			
16	12th Storey beam & slab	31-03-08	17-04-08	31-03-08	17-04-08	0			
17	13th Storey beam & slab	18-04-08	01-05-08	18-04-08	01-05-08	0			
18	Roof	02-05-07	15-05-07	02-05-07	15-05-07	0			

* China Con will be able to catch up the 23 days delay when they reached the 6th Storey

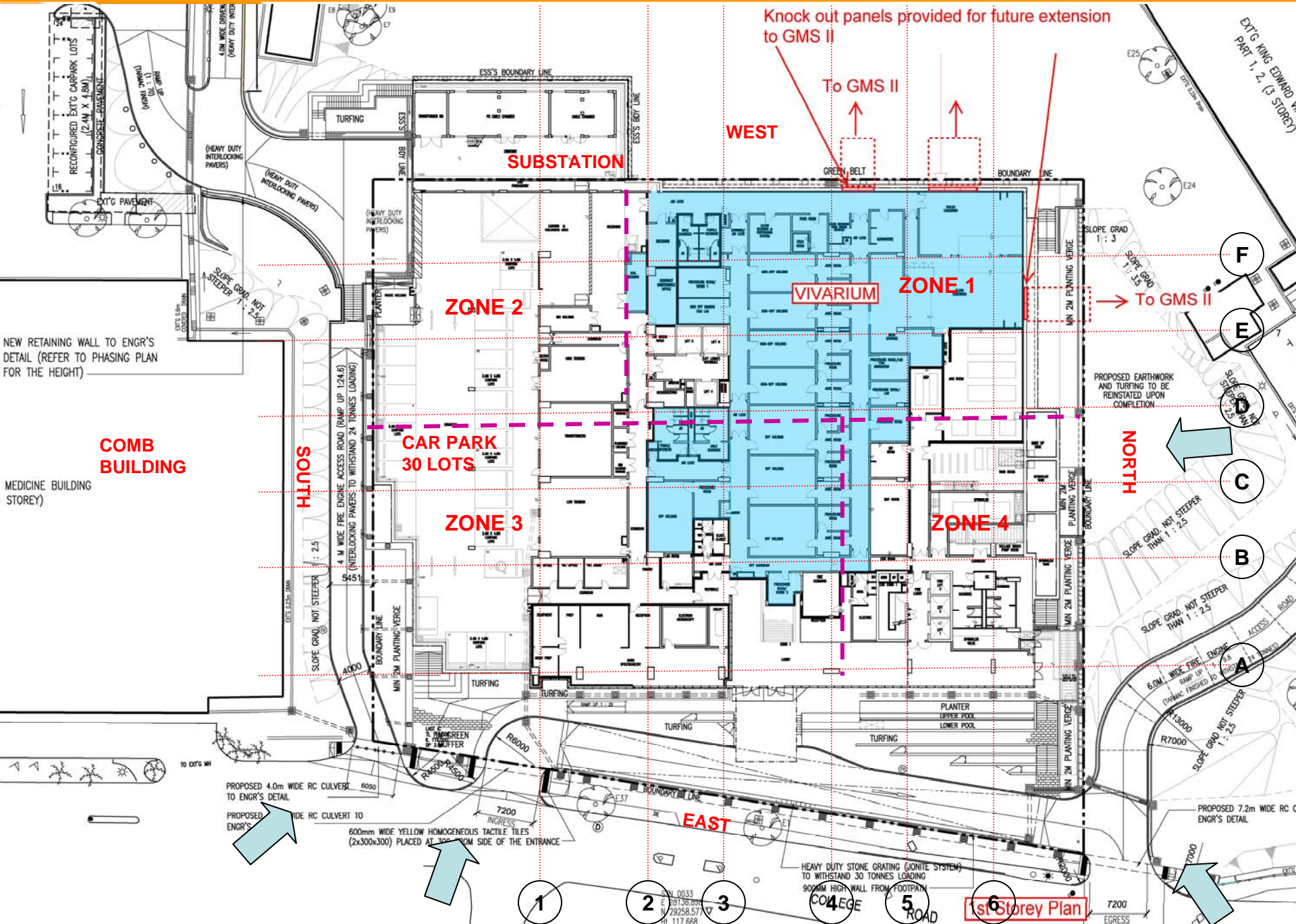
** Base on 30 Sep 2007 progress, the time lapse is 100% but actual structural work completed is 95%.vs planned 100%. The 5% is translated to 1.5 days delay. Estimated delay as at 30 Sep 07 for 2nd Storey is = 15 + 1.5 days = 16.5 days. Generally, the overall delay was reduced by 5.5 days.

DUKE-NUS GRADUATE MEDICAL SCHOOL SINGAPORE – SITE PLAN 1

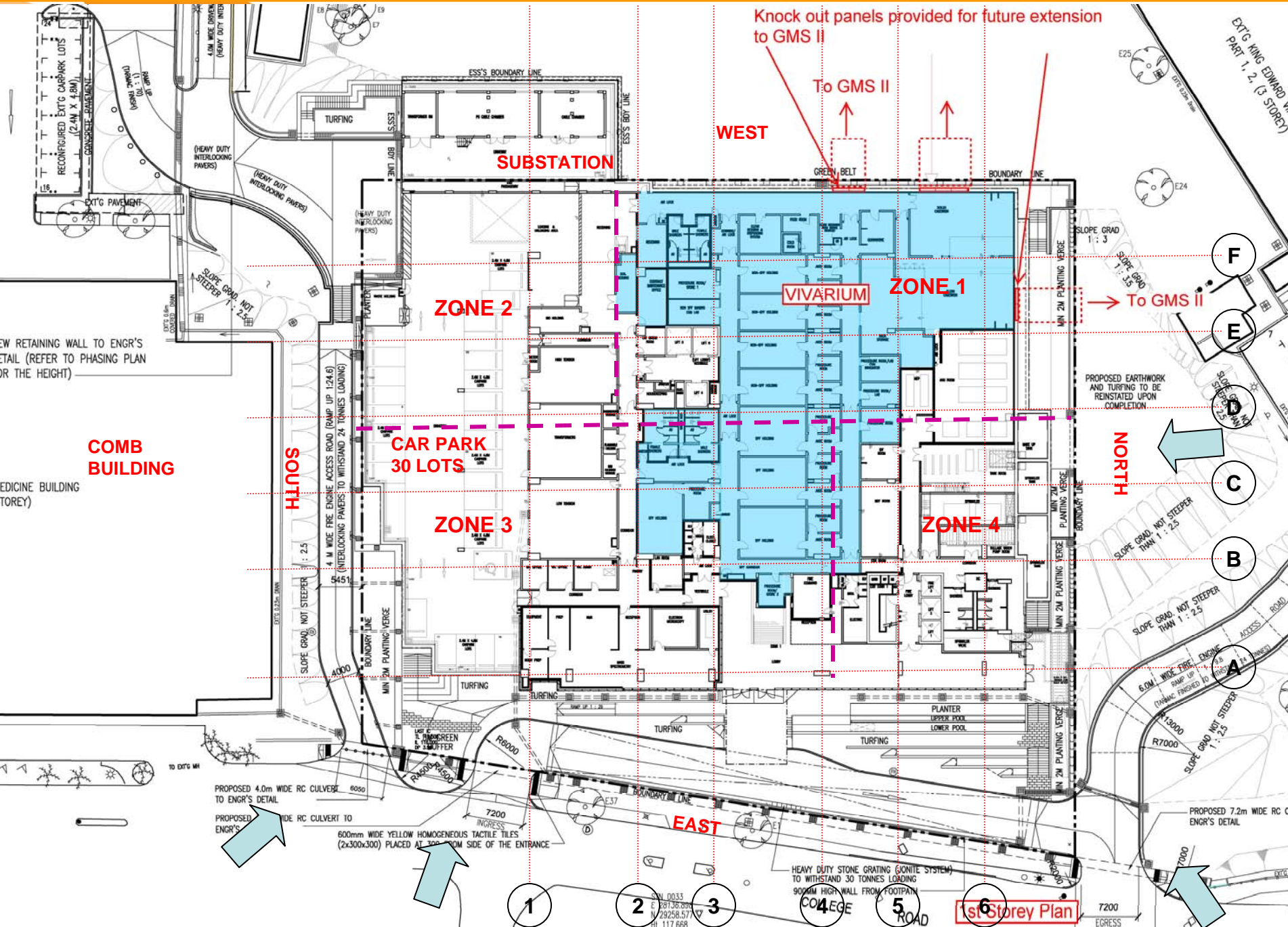


SITE PLAN

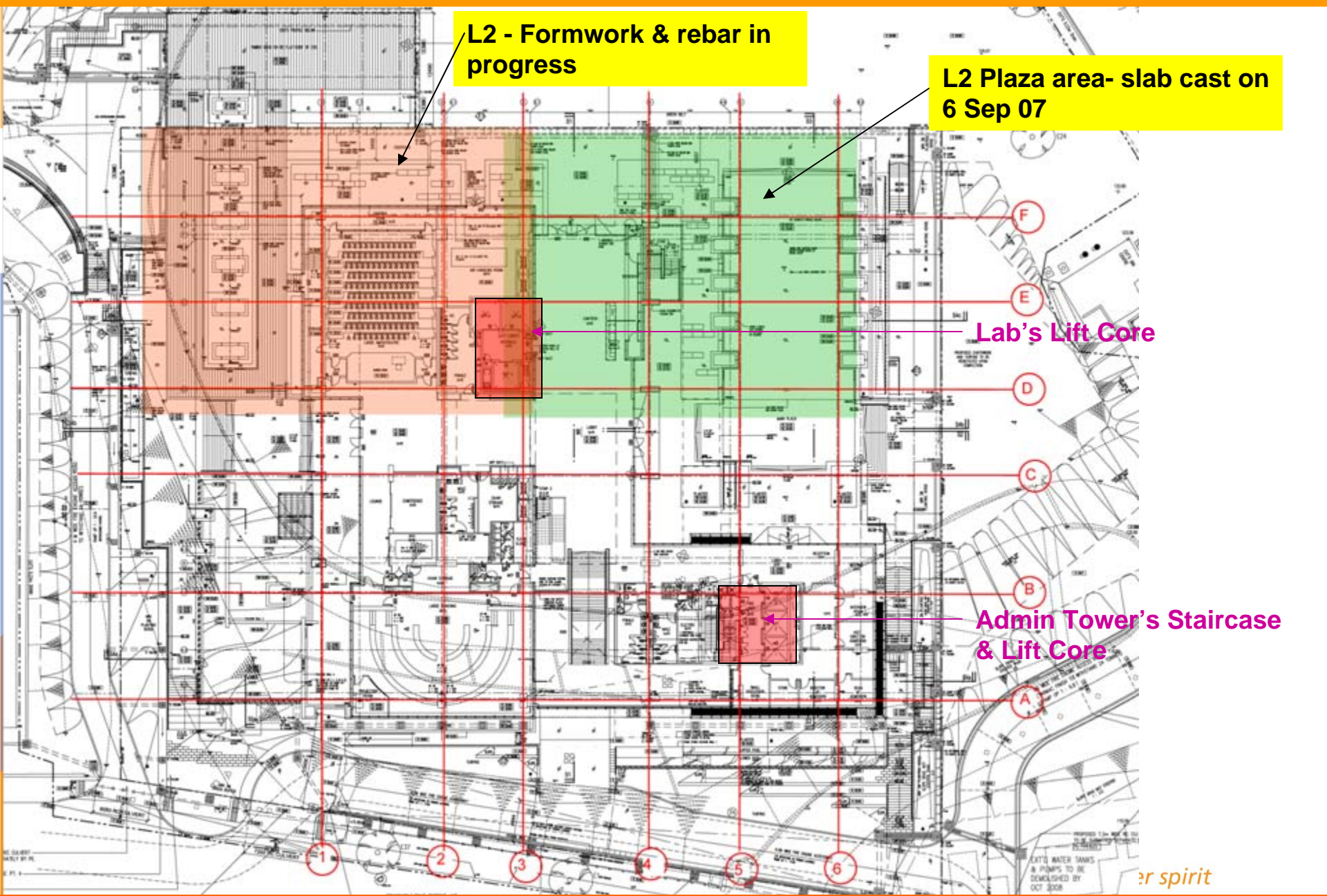
DUKE-NUS GRADUATE MEDICAL SCHOOL SINGAPORE – LEVEL 1 PLAN



DUKE-NUS GRADUATE MEDICAL SCHOOL SINGAPORE – LEVEL 1 PLAN



DUKE-NUS GRADUATE MEDICAL SCHOOL SINGAPORE – LEVEL 2 PLAN



L2 - Formwork & rebar in progress

L2 Plaza area- slab cast on 6 Sep 07

Lab's Lift Core

Admin Tower's Staircase & Lift Core



External staircase from L1 to Main Plaza
Under it are sprinkler tanks & make up tank

Laying of reinforcement and tendons of
beams & slab at L2 of ZONE 1 in progress

ZONE 4

RL 124,50

RL 123,00

5/C

4/C

4/D

L2 - MAIN PLAZA AREA

ZONE 1 - L2







External staircase from L1 to Main Plaza
Under it are sprinker tanks & make up tank

5/C

5/B

ZONE 4 - L1

1st storey





External staircase from L1 to Main Plaza
Under it are sprinkler tanks & make up tank

RL 124.50 2nd storey

RL 123.00



2nd storey

External staircase from L1 to Main Plaza
Under it are sprinkler tanks & make up tank

5/B

RL 123.00

RL 121.00

6.2/A5

6.2/A2

ZONE 4 - L1
1st storey
RL 119.00





DUKE-NUS GRADUATE MEDICAL SCHOOL SINGAPORE – SEPTEMBER 2007 PROGRESS PHOTOS





Laying of formwork for beams & slab at L2 of ZONE 2 in progress

Laying of reinforcement and tendons of beams & slab at L2 of ZONE 1 in progress

Lift Core for Lift 4,5 & 6 at of the Lab Block

ZONE 2

2nd storey

3/B

ZONE 3

4/A

4/B

3/F

ZONE 1

4/C

4/D









DUKE-NUS GRADUATE MEDICAL SCHOOL SINGAPORE – SEPTEMBER 2007 PROGRESS PHOTOS



Date: 4 September 2007

Note: L1's last slab at Zone 4 was cast on 30 Aug 07 – hence L1 slab is 100% completed



2nd Storey Zone 1 Slab cast on 6 Sep 07

2nd storey
RL 124.50

RL 123.00

Wall of external staircase &
sprinkler tanks & make up tank
cast on 6 Sep 07



2nd Storey Zone 1 Slab cast on 6 Sep 07

ZONE 1

2nd storey
RL 124.50



Wall of external staircase & sprinkler tanks & make up tank cast on 6 Sep 07



RL 124.50

RL 123.00





ZONE 2 – 2nd Storey rebar & formwork in progress

2nd storey

1/F2

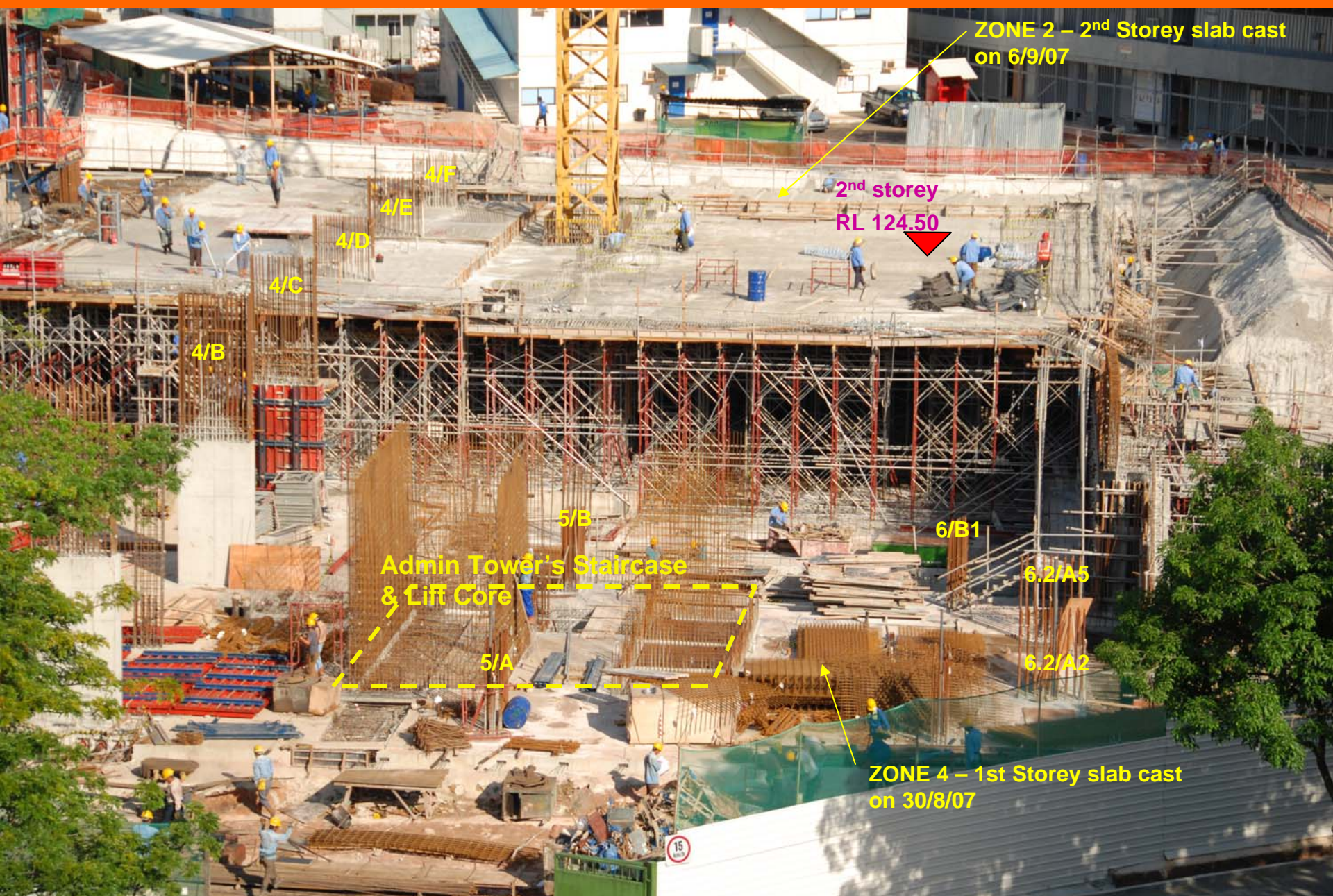
1/E

1/D

1/C

1/B

DUKE-NUS GRADUATE MEDICAL SCHOOL SINGAPORE – SEPTEMBER 2007 PROGRESS PHOTOS



ZONE 2 – 2nd Storey slab cast on 6/9/07

**2nd storey
RL 124.50**

Admin Tower's Staircase & Lift Core

ZONE 4 – 1st Storey slab cast on 30/8/07

4/F
4/E
4/D
4/C

4/B

5/B

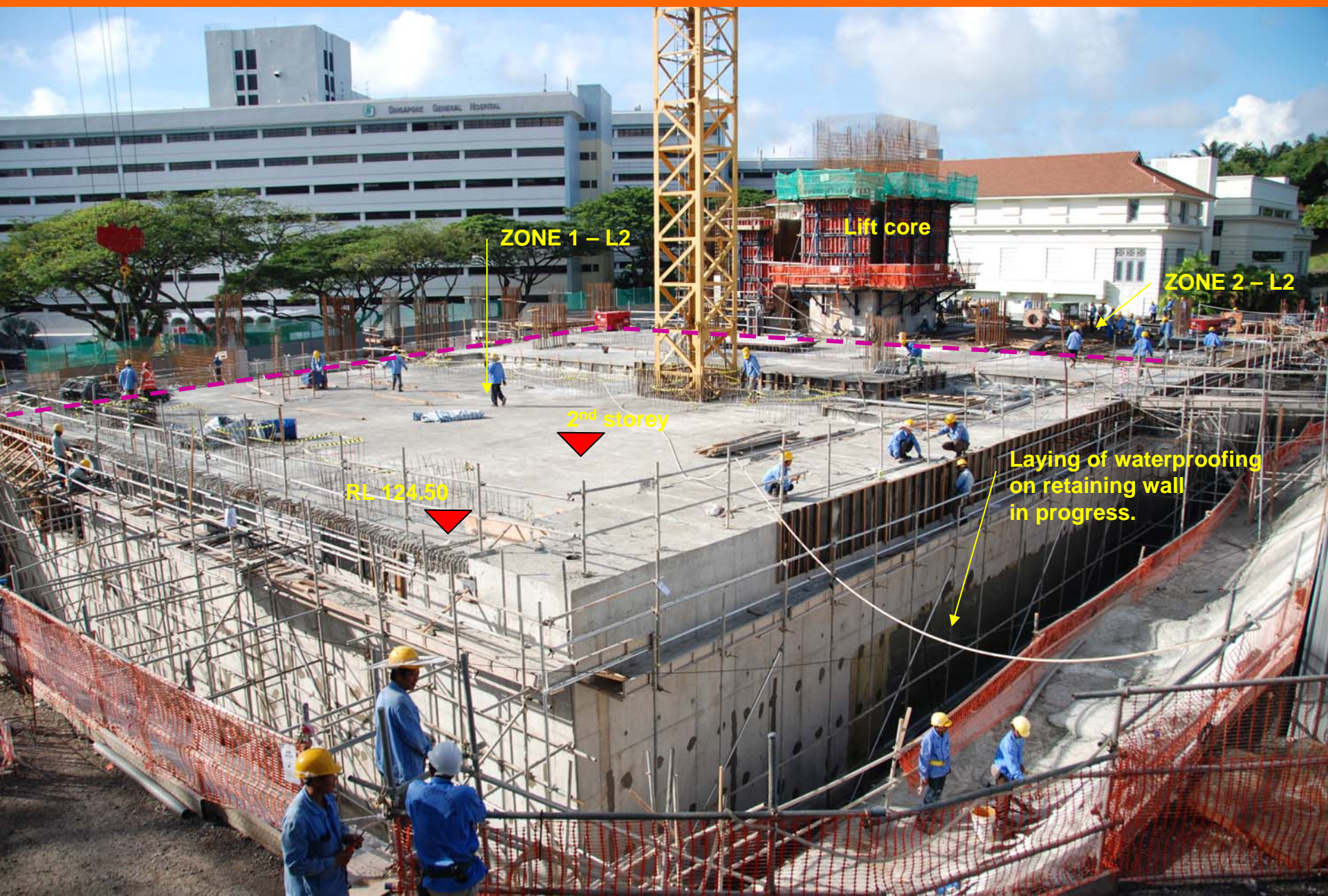
6/B1

6.2/A5

6.2/A2

5/A





ZONE 1 - L2

Lift core

ZONE 2 - L2

2nd storey

RL 124.50

Laying of waterproofing on retaining wall in progress.



Lift core

SWL
200 KG

ZONE 1 – L2

RL 124.50

ZONE 2 – rebar & formwork in progress

2nd storey

3/F

ZONE 2 – L2

Laying of rebar & tendons
works in progress.



2/F

ZONE 2 – rebar & formwork in progress

2nd storey
RL 124.50

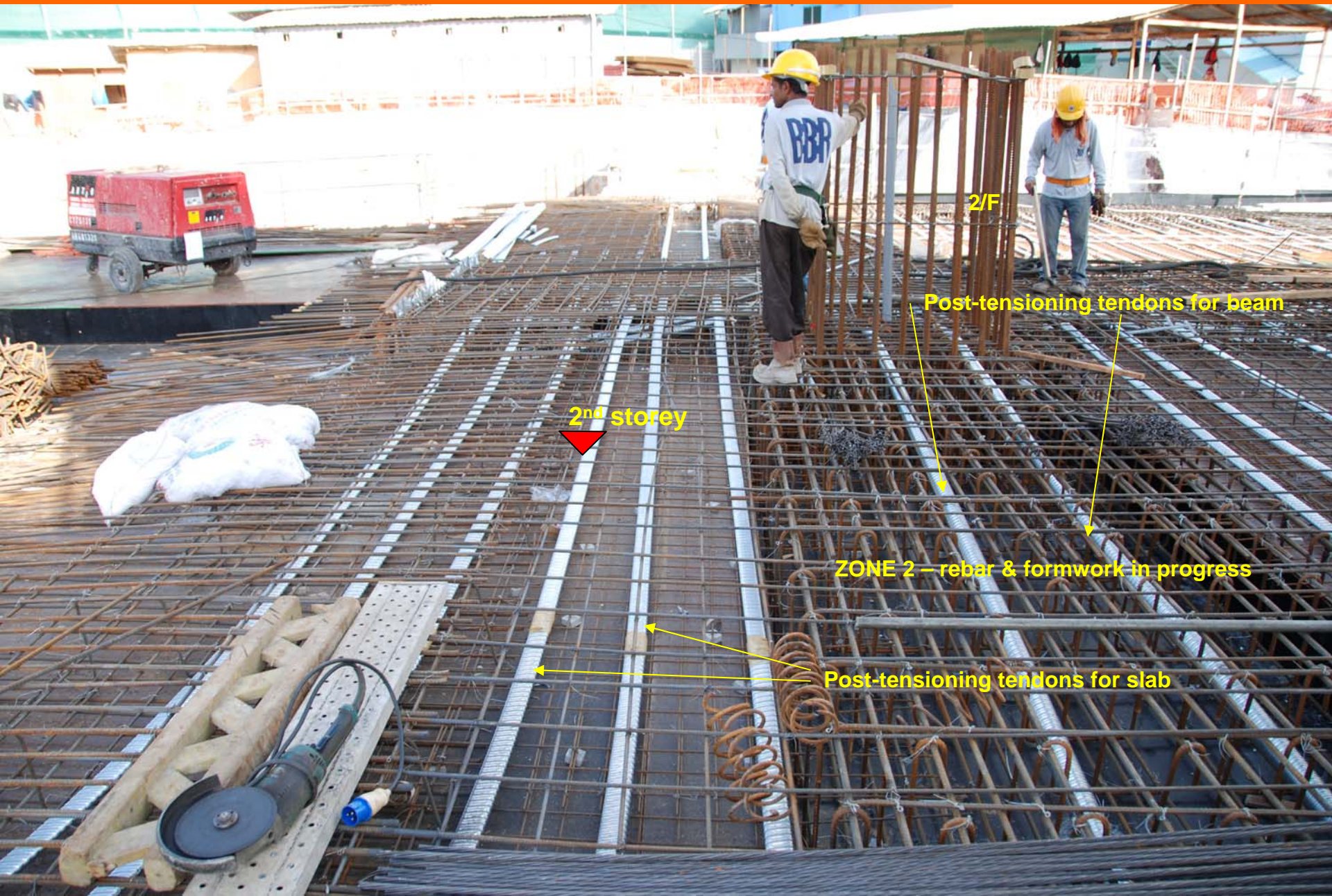




ZONE 2 – rebar & formwork in progress

2nd storey





2nd storey

2/F

Post-tensioning tendons for beam

ZONE 2 – rebar & formwork in progress

Post-tensioning tendons for slab



Lift core & Staircase
of Admin Block

6/A1

6/B1

4/A

5/B1

Lift core & Staircase
of Admin Block



4/A

4/B

3/B

4/C

5/B

2nd storey

RL 124.50





2/D

ZONE 2 – rebar & formwork in progress

2nd storey

Post-tensioning tendons for slab

Post-tensioning tendons for beam

2/E



3/F

2/F

2/E

2/D

2nd storey

ZONE 2 – rebar & formwork in progress

ZONE 2



Formwork

2nd storey

ZONE 2 – rebar & formwork in progress

Post-tensioning tendons for beam

Post-tensioning tendons for slab



13.09.2007 16:03



17.09.2007 12:24



2nd storey





2nd storey slab





SUBSTATION ROOF

2nd storey



Lab's Lift Core

2nd storey

Rebar & formwork in progress



Lab's Lift Core

2nd storey slab





Rebar & formwork in progress

2nd storey slab



Rebar & formwork in progress





Admin block's Staircase & Lift Core

2nd storey platform



3rd storey platform

2nd storey slab

27.09.2007 14:13



Lab's Lift Core

3rd storey platform

1/F2

1/E

1/D

1/C

1/B

2/C

2nd storey slab

27.09.2007 14:14



27.09.2007 14:14



27.09.2007 14:17